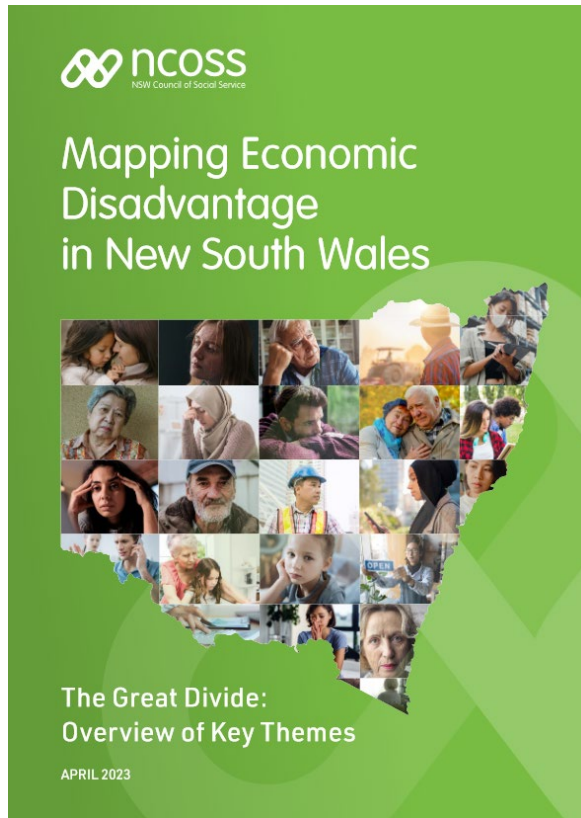


# Mapping Economic Disadvantage in NSW

CCA Annual Conference 2023

10 October 2023

# Mapping Economic Disadvantage in NSW



- Second Mapping Economic Disadvantage in NSW report, in collaboration with NATSEM
- Census and ABS data 2021
- Analyses and maps poverty rates for demographics across the state (age, sex, employment, family arrangements, and housing tenure)
- Compares results to 2016

# 12 Key Themes

(1/3)

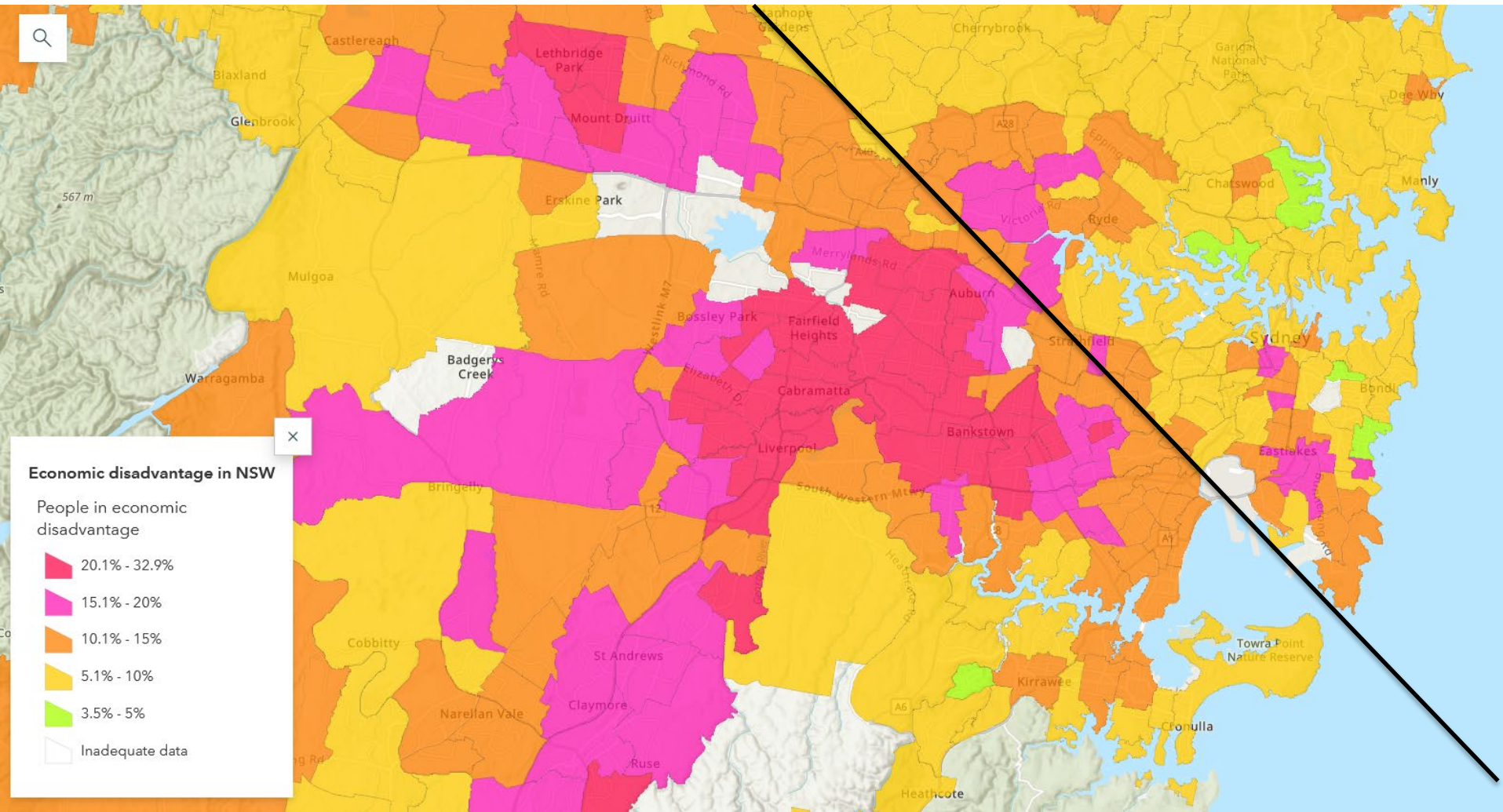


NSW now has one million people living in poverty



Sydney has a significant poverty divide and it's getting worse

# Sydney's Great Poverty Divide



# 12 Key Themes

(1/3)



NSW now has one million people living in poverty



Sydney has a significant poverty divide and it's getting worse



The poverty rate across rural and regional NSW is slightly higher, but the impacts are markedly different

- Young People – 25% higher
- Unemployed – 86% higher
- Single Parents – 39% higher
- Owners with a mortgage – 80% increase

# 12 Key Themes

(2/3)



Older people experienced an alarming growth in poverty



Children still face the highest rates of poverty in NSW of all age groups



Being unemployed or not in the labour force are two of the highest risk indicators of poverty...



..but employment is not a guarantee against poverty

# 12 Key Themes

(3/3)



Public housing is no longer the safety net it used to be



Poverty rates for private renters in Greater Sydney are intensifying



Living by yourself or parenting on your own puts you at significant risk of poverty



Certain communities are at far greater risk of living in a low-income household



Temporary additional income support measures immediately and significantly reduced poverty

# Thank you



[advocacy@ncoss.org.au](mailto:advocacy@ncoss.org.au)