

The Mining and Automotive Skills Alliance

Donna Dejkovski
Manager, Training Products



Welcome to Country

We acknowledge the Traditional Custodians of the lands on which we live and work.

We acknowledge Traditional Custodians of Country throughout Australia and their connections to land, sea and community.

We honour and respect their Elders, past, present and emerging, and extend that respect to all Aboriginal and Torres Strait Islander people.



Jobs and Skills Councils

The Australian Government has established Jobs and Skills Councils (JSCs) to provide industry with a stronger, more strategic voice in ensuring Australia's VET sector delivers better outcomes for learners and employers.

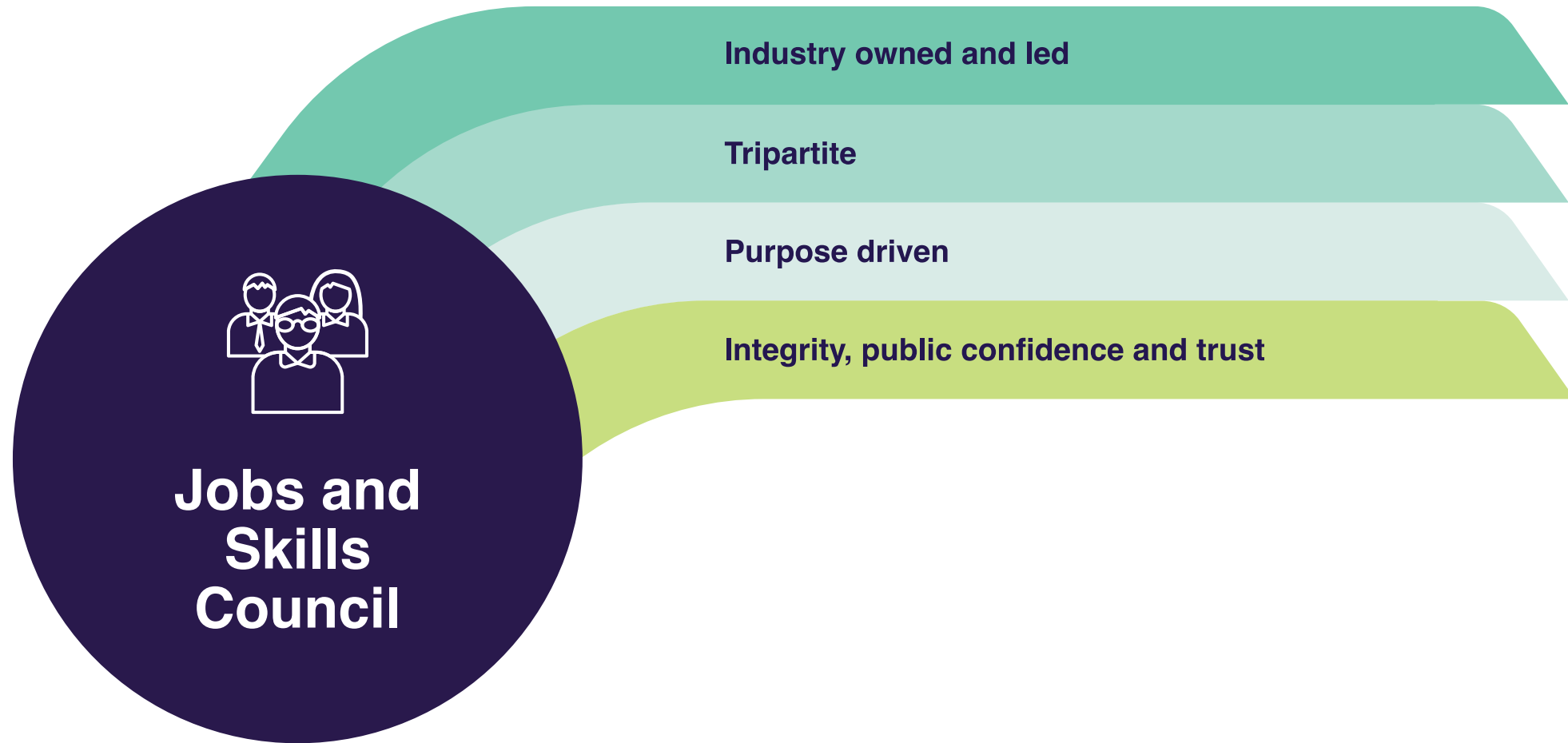


Jobs and Skills Council Industry Focus

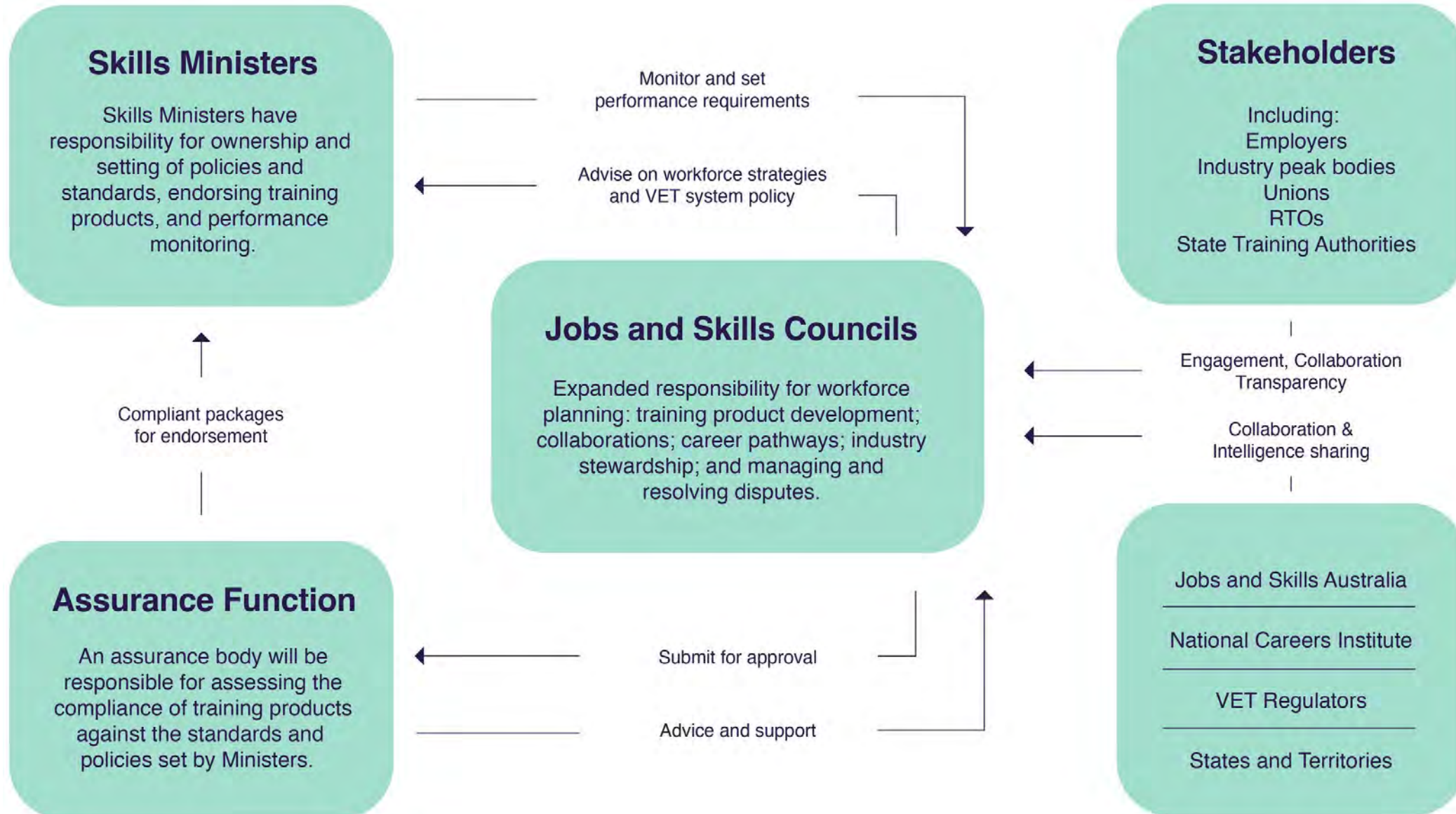
- Automotive Retail, Service and Repair (AUR)
- Automotive Manufacturing (AUM)
- Resources and Infrastructure Industry (RII)



A New Model



The Broader System



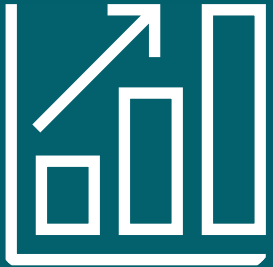
Our Vision and Mission

Our **Vision** is to empower industry to develop essential workforce capabilities for today and tomorrow

Our **Mission** is to strengthen leadership and engagement to deliver a responsive VET system and build a skilled and resilient workforce



Automotive Evolution



Zero emission and intelligent vehicles with battery electric vehicles the norm in 30 years



Embedded software and digital technologies with interconnected and complex operating systems



Workers using more technical equipment in service and repair making them multi-skilled. Much of this training is unaccredited and for specific vehicle manufacturers



Customers are increasingly more environmentally and socially conscious leading to more hybrid and electric vehicles considerations



Alternate modes of transport (bicycles and e-scooters)

Resources Trends



The mining industry accounts for 8% of Australia's gross domestic product (GDP), representing a significant part of the economy.



The industry contributes significantly to Australia's workforce. With the growing demand for mined materials, in addition to strong commodity prices, employment is expected to increase in the mining sector by 5.9% to November 2026.



The Australian mining industry represents 75% of the country's exports.

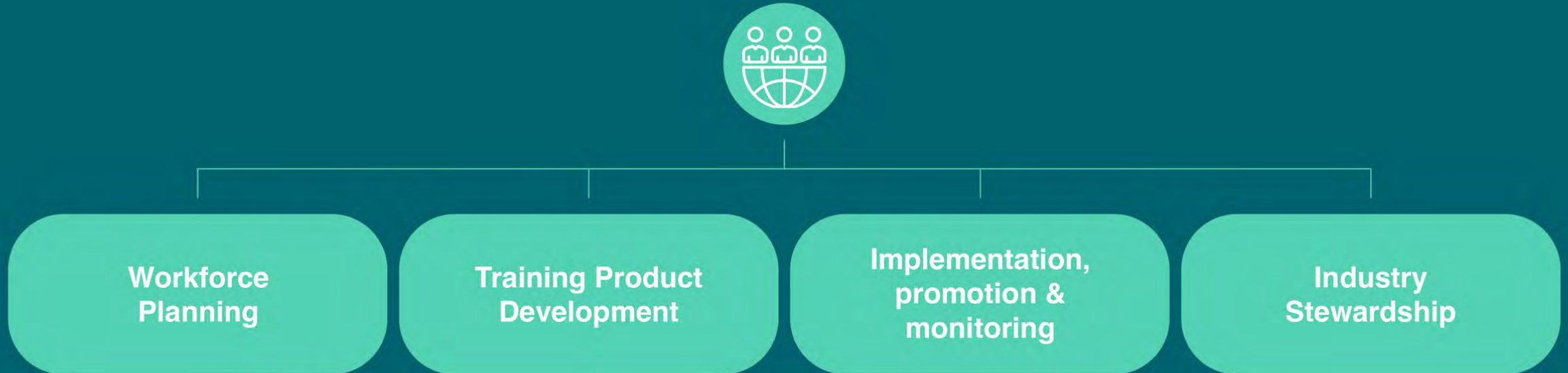


Mining accounts for approx 2% of Australian jobs, with the industry employing 302,600 people in May 2022. Employment growth in the industry was 38.2% over the last 5 years.



Post-school qualifications are often required to work in the industry. 43% of workers hold a certificate III or higher vocational qualification, and 25% possess a bachelor's degree or higher.

Four Key Functions





Building Safe & Respectful Workplaces

*Part of our shared commitment to safe,
respectful and inclusive workplaces*

Collaboration in Action



Libby Lyons – BS&RW Chair
WA Chief Executive Women Chair and
former WGEA director



Natasha de Silva
Former Senior Policy
Executive AHRC

*Specialist in gender
equality and violence
against women*



Dr Michael Flood
Associate Professor in
Sociology - QUT

*Leading expert on
gender, sexuality and
interpersonal violence
and bullying.*



**Professor Paula
MacDonald**
Professor of Work and
Organisation - QUT

*Leading expert in
workplace discrimination
and social justice*



**Associate Professor
Asher Flynn**
Monash University

*Online criminology
specialist and Global
Women's Safety Expert
Advisor to Facebook*



**Professor Colleen
Hayward**

*Expert on issues of
racism, equity and
Indigenous Australians*

Independent SMEs

Building Safe & Respectful Workplaces – Delivery model

1 learning experience



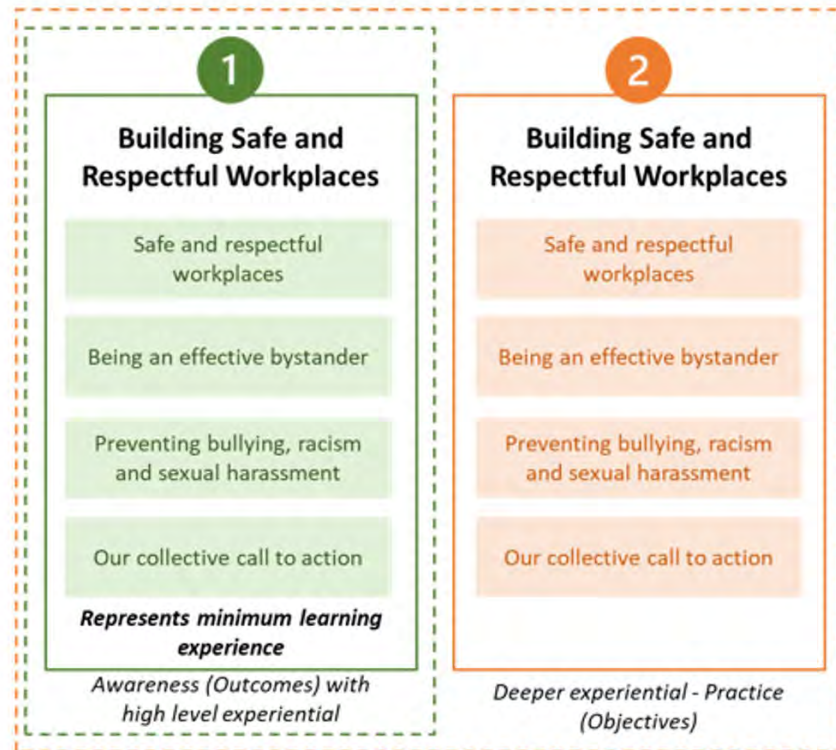
1 common curriculum



1 day – Introductory
1 + build – Experiential
2 day – Immersive

1 day learning on Awareness – covering outcomes with a 2nd day optional Practice build to cover learning objectives – co scheduled or as a refresher

Up to 2 day learning encompassing awareness and practice covering learning and objectives – scheduled as up to 2 day block



Building Safe & Respectful Workplaces – Timeline



AUSMASA.ORG.AU

- Subscribe
- Free Membership
- Events

SOCIAL MEDIA



THANK YOU

The BHP logo, consisting of the letters 'BHP' in a bold, orange, sans-serif font.The Rio Tinto logo, featuring the words 'Rio Tinto' in a large, red, serif font.